

# TALES OF CATISFIELD

-

## Highway to the West

*Extracted from -- 10 Things you did not know about Catisfield -  
Updated 26 July 21.pptx*

*'LAST' version      last update 29/7/2012  
Doug Glading*

## THE Road EAST/West

-- Was 'Catisfield Hill' ( Also Known As 'Stoney Hill' and Now as 'Fishers Hill' )



'Anjou Cottages' probably built 17xx.

The road shown here is quite a decent one – it would have been much rougher and rutted.

## THE Road EAST/West

-- At one time All the Traffic East and West. Went Through Catisfield.

Imagine !!

People  
on foot,  
horses,  
horse  
and  
carts,  
livestock  
.....



M27



Rail

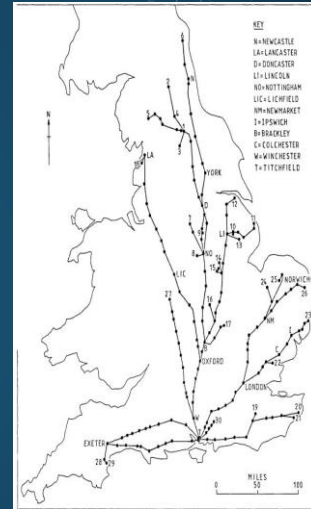


A27

Both ways – east to west, and west to east.

## THE START OF TRAVEL

- Foot and Pony.
- Mostly just Rutted Tracks.
- Rent Collectors, Tax Collectors, Itinerant Traders, Clergy/Monks
- 'Drovers' driving stock (to what became Royal Clarence Victualing Yard Gosport)
- Documents on 'Premonstratensian Itineraries from Titchfield Abbey' c.1400-1405 have been mapped.
- So the eastbound Monks would have crossed the Meon, and set off up the 'Catisfield Hill' track.



Track image is of today's bridleway from the bottom Of Fishers Hill towards Henry Cort

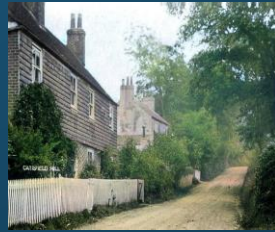
**CLICK**

for the Monks travels

The map of them constructed by recent researchers from the descriptions of each leg (the dots)

## THEN CAME CARTS

- **Traffic sources for the Hill: eg**
  - Titchfield Great Barn (built c. 1410) used as major produce storage site
  - And then a Military Stores site (for Agincourt)
  - Monarchs on their travels had large Retinues and much 'stuff' (eg 20 carts worth).
- *It took a long while till roads became flat like the (colourised) photo!!*

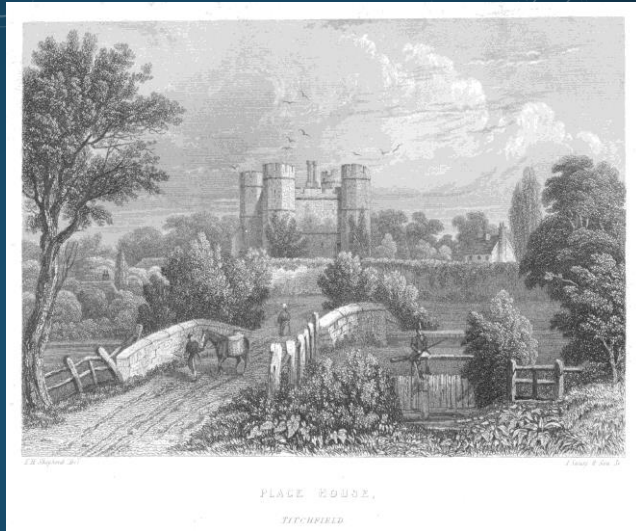


Again an image of today's bridleway that runs from the bottom of Fishers Hill

### *The Road to the West*

- Crossing The Meon just  
outside Titchfield Abbey /

Place House



- The monks built a bridge during the 14th century, which was probably made of stone piers and a wooden parapet (called Kettelbridge?).
- Later a Bridge called **Stony Bridge**, (also Stoney Bridge, also Anjou Bridge) was built c. 1610/25 – today's bridge still.

The antiquary, John Leland reports that the bridge was made of wood when he crossed it in 1542.

Henry commissioned a survey of the estate, on which he had undertaken major works, and the 1610 map produced as a result shows 'Stoney Bridge'.

Local knowledge suggests that the date '1625' was inscribed on the bridge, but this is no longer visible.

Let's hope the bridge survives ongoing 21<sup>st</sup> century traffic.....

## THE WAY FROM FAREHAM, GOSPORT AND PORTCHESTER TO AND FROM BURLESDON, BITTERNE, HAMBLE AND SOUTHAMPTON

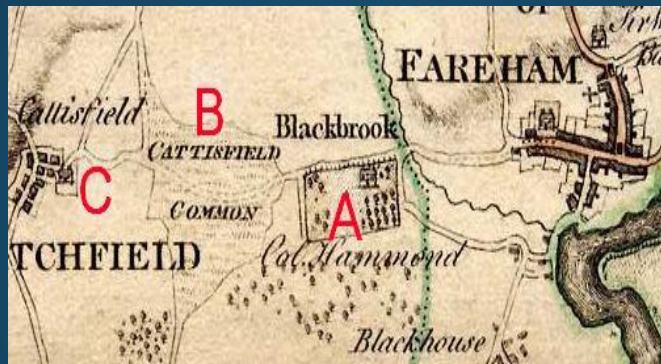


A 1791 Map  
by Milne.

- To get from Fareham towards Southampton all traffic had to go through Catisfield, or some distance inland.
- More details follow
- **Burlesdon bridge** was built by private enterprise about 1783 (1789?), by the Bursledon Bridge Company, following an Act of Parliament the previous year.
- It was built to improve communications east of Southampton, and was a pivot to the new turnpike roads to Northam Bridge in Southampton and to Titchfield. It avoided using the ford at Botley.



## IN DETAIL. 1.



- A. From Fareham – past the Blackbrook Estate
- B. Over Cattisfield Common (note – no Peak Lane southwards)
- C. Past Highlands Road, Enter the cluster that is Cattisfield -

Use pointer on map.

One use of Cattisfield Common was as a rest /collection area for the animal droves heading to Gosport



## In detail. 2.

- A. At the Post Office corner you could turn left for Ranvilles Lane and Crofton.
- B. The 'through traffic' turned right down 'Catisfield Hill' ie Fishers Hill.
- C. The commute to the Iron Works would have been easy for Henry Cort when he lived in Catisfield House!.
- D. Over the bridge, turn left outside 'Place House' and go straight into Titchfield.



Use pointer.

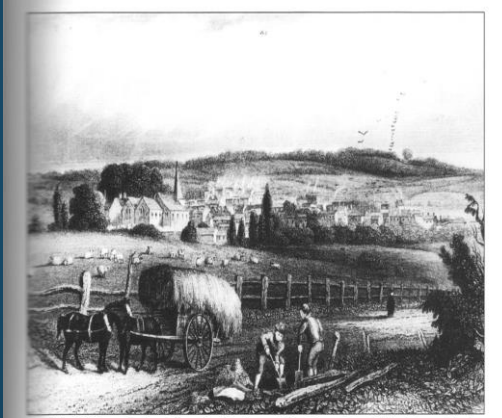
## In detail. 3.



- A. In Titchfield turn right just before The Square
- B. And off towards Burlesdon

## THEN CAME THE AVENUE

- Rich individuals invested in building TURNPIKES – good well-surfaced toll roads
- As part of this a direct road (also known as 'Catisfield Hill') from Heathfield (ie today's Peak Lane junction) was opened c. 1811. This went straight into Titchfield
- So Catisfield became a peaceful backwater, with Solent views, suitable for Admirals



The Titchfield to Cosham Turnpike Road, c. 1812. Opened in 1811, this road had a considerable effect on the appearance of Titchfield for, prior to its construction, the route from Fareham to Titchfield had to pass through Catisfield village down Fishers Hill to the Anjou Bridge, then along Mill Lane into the village.

Now there is a new bridge taking the road straight into Titchfield village from Fareham.

(Traffic from Stubbington still goes into Titchfield village via the southern bridge . )

Strangely the Fareham-Southampton rail line not shown

## AND DID THOSE FEET..... WALK UPON CATISFIELD?

- Pepys -- April 1662 -- *Samuel Pepys went from Portsmouth to Southampton and back (so probably traversed Fishers Hill)*
- Bill Shakespeare – c. 1592 - *As a tutor at Place House (Titchfield Abbey) the playwright must have walked around pondering his plots*
- Henry VI – in 1445 *Henry VI & Margaret of Anjou are said to have gone down Fishers Hill, to Titchfield Abbey from Southwick, for re-confirmation there of their marriage in France, or left the Abbey that way.*

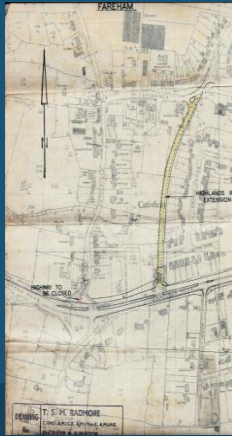
*So although the bridge is known as 'Anjou Bridge' (even 'Iron Duke Bridge' !!) - this crossing was way before the current bridge was actually built.....*

*[ Of course Pepys was on a horse or maybe in a cart/coach, and Henry in a posh carriage. ]*

*Margaret may have come from Southampton for the ceremony, so perhaps they just left this way.*

## THE ROADS - FOR COMPLETENESS

- In 1967 the exit of Catisfield Lane onto The Avenue (A27) was closed. And Highlands Road extended south from its previous end, by Catisfield Cottage, onto the Avenue



The Eastern Bypass and the Gyratory where it joined the A27 were built in the 1980's.



The New Titchfield Gyratory -- coming 2021?



**CLICK**  
this time.

for the first (lefthand) image/text. Catisfield Lodge demolished at

**CLICK**

for the Eastern Bypass (which goes just by the Mill)

**CLICK**

for the NEW LATEST

To Conclude - two rare photos....



SCHEDULED  
MONUMENT



The hourly buses with careful drivers...

**CLICK**

for the first photo   Fareham – Southampton via Botley

**CLICK**

for the second